

ESPRIT

FAST & FRESH





Esprit is the refrigerated display case designed to meet a new way of approaching fast food. A neat and clean design with a hinged opening window. Its essential lines allow it to fit in perfectly with any interiors, so that it can be freely customised by arranging its modules to taste.

IT

Esprit è la vetrina refrigerata progettata per soddisfare i nuovi approcci della ristorazione veloce. Un design pulito ed elegante, con vetrina apribile a compasso. Le sue linee essenziali la rendono adatta a integrarsi perfettamente con l'arredamento di ogni locale, lasciando spazio alla massima creatività per la personalizzazione dei moduli.



D136 White Oak

The Perfect Fit for Every Room

L'espositore ideale per Eatery.

Infinite soluzioni per soddisfare tutte le esigenze della ristorazione gourmet: Esprit è perfetto per l'esposizione di sandwich, pasticceria, cioccolateria, pizza e cibi caldi. L'espositore giusto per i locali di tendenza in cui vendita, take-away e consumo sul posto si combinano in un unico concetto.

EN An ideal display case for Eatery.

Endless solutions to cater any gourmet catering need: Esprit is perfect to display sandwiches, pastry and chocolate creations, pizza and warm dishes. Just the right display for trendy store concepts, where sale, take-away and on-site dining merge together.

FR Le présentoir idéal pour le service-traiteur.

Des solutions infinies pour satisfaire toutes les exigences de la restauration gourmet: Esprit se prête parfaitement à l'exposition de sandwiches, de pâtisseries, de chocolats, de pizzas et de plats chauds. Le présentoir parfait pour les établissements à la mode où la vente, les plats à emporter et la consommation sur place sont réunis dans un seul concept.

DE Die ideale Kühltheke für Eatery.

Unbegrenzte Lösungen für alle Ansprüche des Gourmet-Caterings: Esprit eignet sich perfekt für die Präsentation von Sandwiches, Gebäck, Schokolade, Pizza und warmen Speisen. Die richtige Kühltheke für Trendlokale, in denen Verkauf, Take-away und Verzehr vor Ort in einem Konzept vereint sind.

1 Teca in vetro incollato.
EN Fixed glass case.
FR Vitrine en verre collé.
DE Glasvitrine mit geklebtem Glas.

2 Complementi d'arredo realizzabili su richiesta del cliente (optional).
EN Furnishing upon customer request (optional).
FR Pièces de décoration sur requête du client (optional).
DE Erreichbare Einrichtungsgegenstände bei Anfrage des Kunden (optional).

3 Ventilazione frontale antiappannante.
EN Anti-fogging front and side ventilation.
FR Ventilation frontale antibuée.
DE Antibeschlag Frontumluftkühlung.

4 Illuminazione CRIOLED®.
EN CRIOLED® lighting.
FR Éclairage CRIOLED®.
DE CRIOLED®-Beleuchtung.

5 Vetro apribile a compasso.
EN Lift-forward glass.
FR Vitres carrées rabattables.
DE Geraden Kippscheiben.





6

7

8

9

10

- 6** Piano di lavoro in acciaio inox.
EN Worktop in stainless steel.
FR Plan de travail en acier inoxydable.
DE Arbeitsplatte aus rostfreiem Edelstahl.

- 7** Zona d'esposizione in acciaio inox.
EN Display area in stainless steel.
FR Zone d'exposition en acier inoxydable.
DE Ausstellungsfläche aus rostfreiem Edelstahl.

- 8** Zoccolo parapolvere su tutto il perimetro del banco.
EN Perimetrical bumper skirting.
FR Plinthe de sol perimetral.
DE Umlaufende Wischleiste.

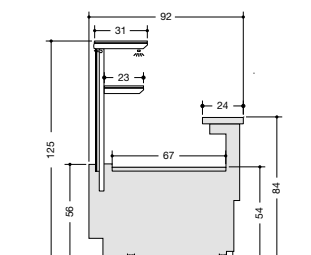
- 9** Refrigerazione ventilata con potenziometro per regolazione della portata.
EN Ventilated refrigeration with potentiometer to adjust air flow rate.
FR Réfrigération ventilée avec potentiomètre pour régulation du débit d'air.
DE Durchlüftete Kühlung mit Potentiometer für die Einstellung der Luftmenge.

- 10** Evaporatore con verniciatura anticorrosione.
EN Evaporator with anti-corrosion painting.
FR Évaporateur avec vernis anticorrosion.
DE Verdunster mit korrosionfester Lackierung.

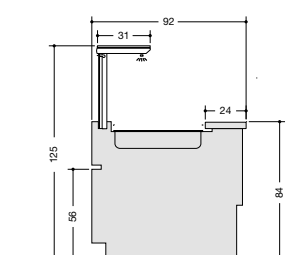


Many Catering Concepts, One Solution

ES200 - ES210	L (cm)*	93,7	125	187,5	218,8	281,2
Consumo orario / Hourly consumption	Wh	209	214	429	434	495
Classe climatica / Climate Class	ISO 23953-2	3 - M2				
Superficie espositiva / Display surface	m ²	0,62	0,83	1,25	1,46	1,88
Portata piani esposizione / Maximum Load display surface	Kg/m - Kg/m ²	95 - 105 (l)				
Portata mensole in vetro / Maximum Load glass shelves	Kg/m - Kg/m ²	8 - 30 (l)				
Gruppo frigorifero / Refrigeration unit	GAS	R290				
Controllo - banco con gruppo frigorifero Control - cabinet with built-in refrigerator unit	ELECTRONIC	Easy Touch Control				

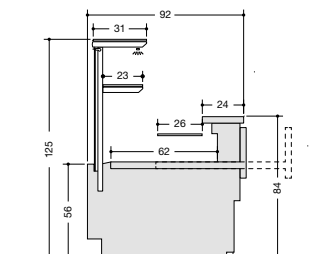


ES 200

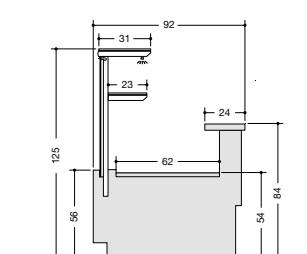


ES 210

ES300	L (cm)*	93,7	187,5	281,2
Consumo orario / Hourly consumption	Wh	209	429	495
Classe climatica / Climate Class	ISO 23953-2	3 - H1		
Superficie espositiva / Display surface	m ²	0,74	1,48	2,22
Portata piani esposizione / Maximum Load display surface	Kg/m - Kg/m ²	95 - 105 (l)		
Portata mensole in vetro / Maximum Load glass shelves	Kg/m - Kg/m ²	8 - 30 (l)		
Gruppo frigorifero / Refrigeration unit	GAS	R290		
Controllo - banco con gruppo frigorifero Control - cabinet with built-in refrigerator unit	ELECTRONIC	Easy Touch Control		

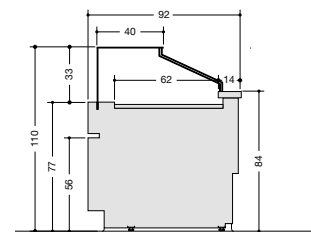


ES 300

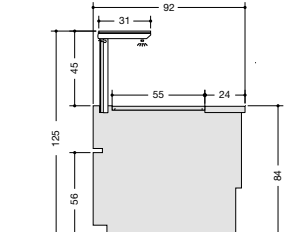


ES 310

ES340 / ES340 DUAL	L (cm)*	93,7	125	187,5
Consumo orario / Hourly consumption	Wh	439	508	905
Superficie espositiva / Display surface	m ²	0,62	0,83	1,25
Portata piani esposizione / Maximum Load display surface	Kg/m - Kg/m ²	95 - 105 (l)		
Gruppo frigorifero / Refrigeration unit	GAS	R452A		
Controllo - banco con gruppo frigorifero Control - cabinet with built-in refrigerator unit	ELECTRONIC	Dual Technology Control		

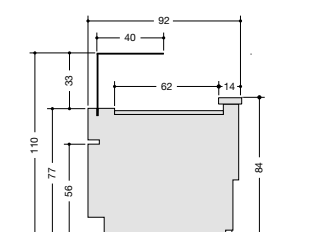


ES 340



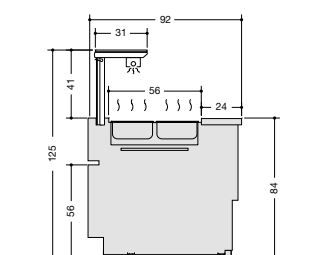
ES 600

ES350	L (cm)*	93,7	125	187,5	218,8	281,2
Consumo orario / Hourly consumption	Wh	209	214	429	434	495
Classe climatica / Climate Class	ISO 23953-2	3 - H1				
Superficie espositiva / Display surface	m ²	0,62	0,83	1,25	1,46	1,88
Portata piani esposizione / Maximum Load display surface	Kg/m - Kg/m ²	95 - 105 (l)				
Gruppo frigorifero / Refrigeration unit	GAS	R290				
Controllo - banco con gruppo frigorifero Control - cabinet with built-in refrigerator unit	ELECTRONIC	Easy Touch Control				

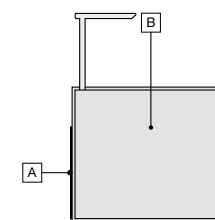


ES 350

ES450 H-COMBI	L (cm)*	125	187,5
Consumo orario / Hourly consumption (2)	Wh	3660	5730
Resistenze riscaldamento ventilato Ventilated electrical heater	W	3000	4500
Resistenza per umidità controllata Electrical heater for controlled humidity	W	800	1600
Controllo / Control	ELECTRONIC	Easy Touch Control	



ES 450 H- COMBI



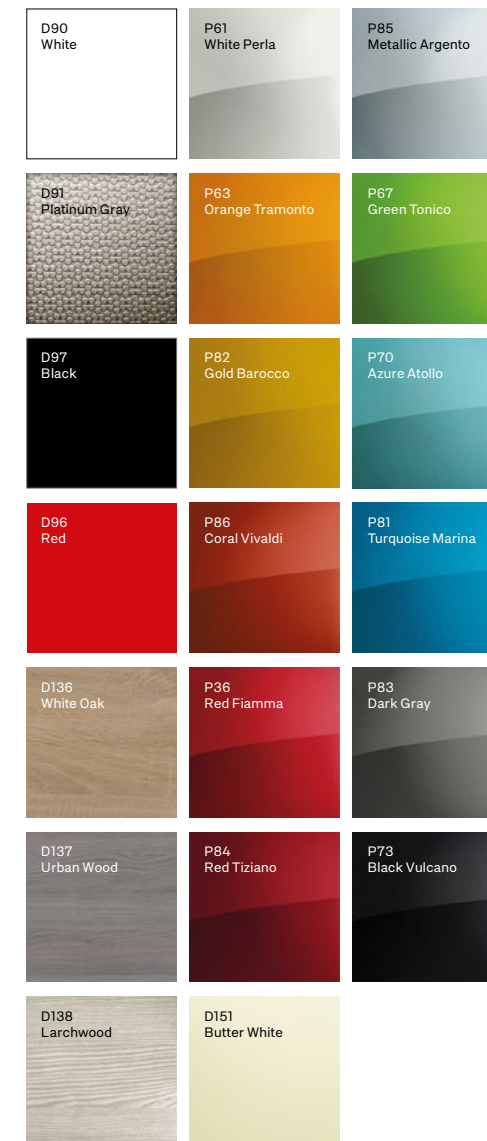
L (cm)*= Lunghezza senza spalle. Spessore 1 spalla: 4 cm.
L (cm)*= Length without endwalls. Thickness 1 endwall: 4 cm.

(1) = Carico Uniforme distribuito / Uniformly distributed load
(2) = Dato analizzato su un funzionamento di 12h / Data analysis based on 12h operation

A	B
D90	D90
D91	D91
D96	D96
D97	D97
D136	D136
D137	D137
D138	D138
D151*	D151*
RAL*	RAL*
P36*	P36*
P61*	P61*
P63*	P63*
P67*	P67*
P70*	P70*
P73*	P73*
P81*	P81*
P82*	P82*
P83*	P83*
P84*	P84*
P85*	P85*
P86*	P86*
I301*	I301*
I303*	I303*

*= Colore con sovrapprezzo
*= Color at Extra cost
*= Supplément couleur
*= Farb mit Aufpreis

Le caratteristiche tecniche potranno subire modifiche senza preavviso.
EN Technical details could be changed without notice.
FR Les caractéristiques techniques pourraient subir des modifications sans préavis.
DE Änderungen vorbehalten.



ESPRIT

FAST & FRESH

CRIOCCABIN
TASTE PRESENTATION



GKM Gewerbekühlmöbel AG
Türlacherweg 40
6060 Sarnen

info@gkm-ag.ch
gkm-ag.ch